

Gate Valve

Bolted Bonnet, Rising stem, Flanged
Carbon, Alloy and Stainless Steel



SIZE	CLASS	MODEL NO.
DN 40-600 (1 1/2"-24")	150	GT-1-F-F-A1
DN 40-300 (1 1/2"- 12")	300	GT-1-F-F-A2
DN 50-200 (2" - 8")	600	GT-1-F-F-A3



Features

- The Stem nut design allows for The removal of the hand-wheel while keeping The Stem and gate in fixed position.
- Anti-frictional bearings are provided in higher sizes & classes for smoother operation.
- All The valves provided with backseat arrangement.
- Bi-directional shut-off
- Body ports are streamlined, permitting unobstructed flow, reduced turbulence, result in low pressure drop and lower erosion.
- Solid Wedge up to DN 65 & Flexible for above sizes
- Renewable Press fit type for Seat CS & Integral for SS
- Full bore assures NO PRESSURE DROP across the valve
- Two Piece gland functions as the back seat for assured stem sealing at all pressures. It also helps user to replace on-line stem seals.

OPTIONS

- Bonnet Extension are provided for Low temperature/Cryogenic services.
- Locking devise helps to prevent accident in plant/theft of material/assured open/close condition etc.

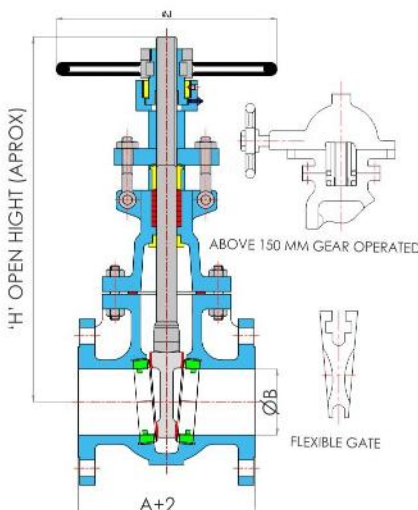
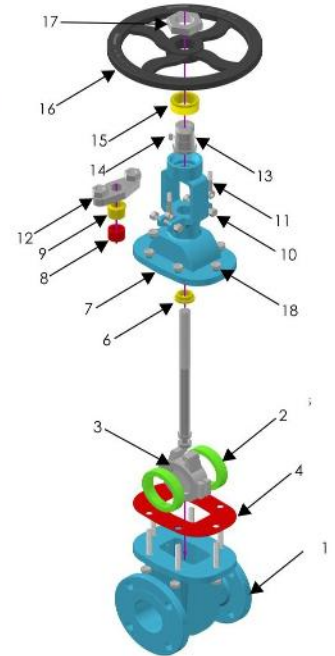
STANDARDS COMPLIANCE

- Valve Design API 600, API 603 & ISO 10434 ASME B16.34 BS 1414
- End to End ASME B16.10 & ISO 5752
- Flanged Dimensions ASME B16.5 & ISO 7005-1 Part. 1
- Buttweld Dimensions ASME B16.25
- Visual Inspection MSS SP- 55
- Marking MSS SP-25 & ISO 5209

TESTS AND CERTIFICATES

- Pressure testing API 598 & BS EN 12266-1
- Other ISO 9001:2008

No.	DESCRIPTION	MATERIAL					
		ASTM SPECIFICATION					
1	BODY	A 216 WCB	A 352 LCB	A 351 CF8	A 351 CF3	A 351 CF8M	A 351 CF3M
2	SEAT RING	A276-410 OR WITH STL.		304/304 STL.	304 L/304L STL.	316/316 STL.	316 L /316 L STL.
3	WEDGE	A276-420 OR WITH STL.		304/304 STL.	304 L/304L STL.	316/316 STL.	316 L /316 L STL.
4	BODY JOINT GASKET	SS 304 SPW + GRAPHITE			SS 316 SPW + GRAPHITE		
5	STEM	A276 410		A 276 304	A 276 304 L	A 276 316	A 276 316 L
6	BONNET BUSH	A276 410		A 276 304	A 276 304 L	A 276 316	A 276 316 L
7	BONNET	A 216 WCB	A 352 LCB	A 351 CF8	A 351 CF3	A 351 CF8M	A 351 CF3M
8	GLAND PACKING	GRAPHITE			GRAPHITE/PTFE		
9	GLAND BUSH	A276 410		A 276 304	A 276 304 L	A 276 316	A 276 316 L
10	CROSS BOLT & NUT	CARBON STEEL			STAINLESS STEEL		
11	EYE BOLT & NUT	A 193 GR.B7/194 2H	A 320 L7M/194 7M	A 193 GR.B7/A194 GR.2H OR B8/8			
12	GLAND FLANGE	CARBON STEEL			STAINLESS STEEL		
13	YOKE SLEEVE	SG IRONNICKEL RESIST					
14	HAND WHEEL KEY	CARBON STEEL			CARBON STEEL		
15	YOKE SLEEVE NUT	CARBON STEEL			STAINLESS STEEL		
16	HAND WHEEL	CARBON STEEL			CARBON STEEL / STAINLESS STEEL		
17	HAND WHEEL NUT	CARBON STEEL / STAINLESS STEEL					
18	BODY JOINT STUD & NUT	A 193 GR.B7/194 2H	A 320 L7M/194 7M	A 193 GR.B7/A194 GR.2H OR B8/8			



SIZE	B	CLASS 150			CLASS 300			CLASS 600		
		A	H	J	A	H	J	A	H	J
25	25	127	205	152						
40	38	165	265	152	190	305	152			
50	51	178	397	203	216	405	200	292	480	250
65	63	190.5	420	203	241	470	250	330	530	250
80	76	203	487	254	282	505	250	356	360	300
100	102	229	611	254	305	615	300	432	750	350
125	125	254	745	305						
150	152	267	825	305	403	865	350	559	975	450
200	203	292	1060	356	419	1092	450	660	1230	500
250	254	330	1276	457	457	1300	500			
300	306	356	1484	508	502	1440	550			
350	336.5	381	1636	508						
400	387	407	1875	600						
450	438	432	2178	600						
500	489	457	2380	800						
600	591	508	2680	800						

ALL DIMENSIONS ARE IN MM

Design and dimensions are subject to change without prior notice