

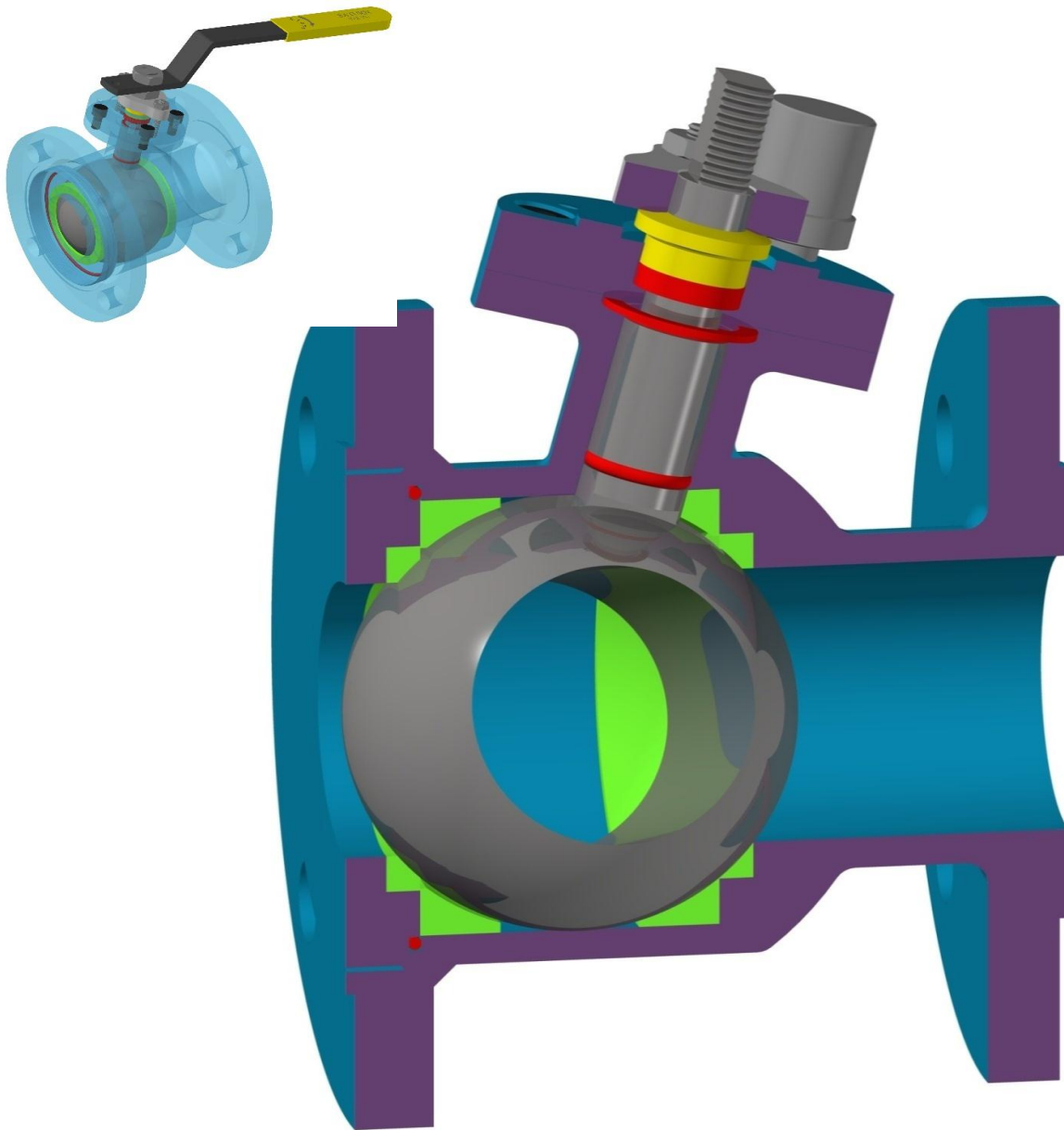
'Angle' type Flush Bottom Ball valve

Model BL-B-A-1-F-F-A1

40mm to 100mm / Class 150



SATURN[®]
VALVES



ENGINEERING RE-DEFINED



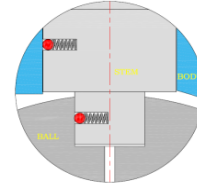
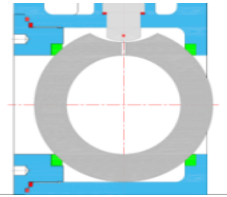
Mevada Engineering Works Pvt.Ltd.

DESIGN FEATURES



ANTISTATIC DEVICE

When static charge is generated due to high velocity of working fluid & gets concentrated on the ball, spring loaded ball between ball to stem & stem to body discharges static electricity.



OFF-CENTER DESIGN

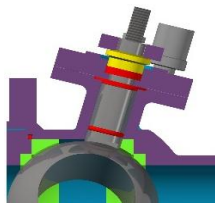
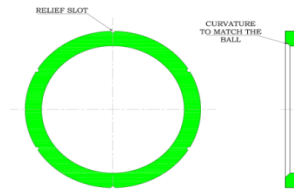
Off-centre design & protruded ball assures minimum contamination between reactor or vessel pad and ball.

ONE PIECE DESIGN

Reduced number of joints makes it suitable for applications where leakage to the atmosphere is not acceptable.

SEAT DESIGN

The special design seat feature with relief slots on seat O.D. Relieves cavity pressure developed in cavity of body to upstream seat. This design reduces friction, minimize seat wear and lowering operating torque.

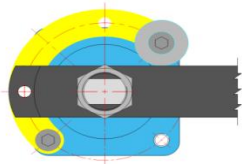
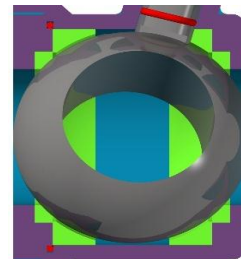


ANGLED STEM DESIGN

Angled stem design prevents actuator from fouling with vessel

CAVITY FILLED DESIGN

This design eliminates most volume between ball, body & stem. This reduces area for product build up associated with conventional ball valve.



ISO 5211 MOUNTING PAD

All our ball valves are Equipped with Integral mounting pad as per ISO 5211 that facilitates easy mounting of hardware viz. Pneumatic Actuator, Gear Box, Limit Switch, Locking Arrangement, etc.

STANDARD COMPLIANCE & DIMENSIONS



SATURN
VALVES

STANDARD COMPLIANCE

DESIGN STANDARD :- BS EN ISO 17292 , ASME B 16.34

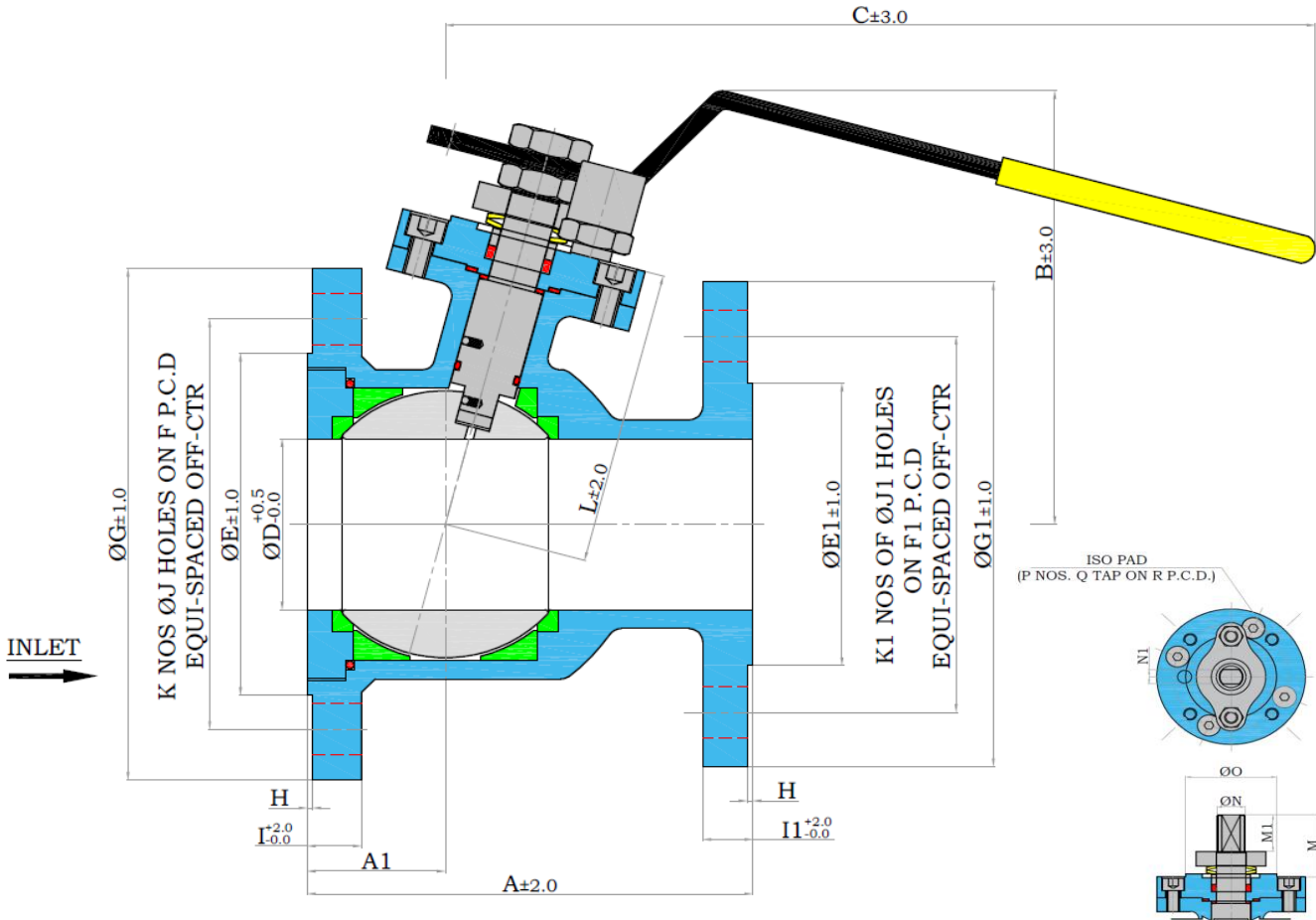
PRESSURE TEST :- BS EN ISO 12266-1

END TO END :- MEWPL's STD.

FLANGE DIMENSIONS :- ASME B 16.5 , BS 10, DIN 1092-1

Certification : EN 102043.1

DIMENSIONS



All Dimensions are in MM

SIZE	A	D	A1	INLET FLANGE								OUTLET FLANGE								B	C	L	P	Q	R	M	M1	ØN	N1	O
				ØG	K	ØJ	F	E	I	H	ØG1	K1	ØJ1	F1	E1	I1														
40X50MM	127	38.1	31.3	150	4	19.05	120.7	92.1	16.3	2	125	4	15.9	98.4	73	14.7	175	268	121	4	M6	50	39	23	14.35	9.52	35			
50X65MM	178	50.8	40.5	180	4	19.05	139.7	104.8	17.9	2	150	4	19.05	120.7	92.1	16.3	199	294	148	4	M8	70	43	26	17.53	11.10	55			
50X80MM	178	50.8	40.5	190	4	19.05	152.4	127.0	19.5	2	150	4	19.05	120.7	92.1	16.3	199	294	148	4	M8	70	43	26	17.53	11.10	55			
65X80MM	160	63.5	49.6	190	4	19.05	152.4	127.0	19.5	2	180	4	19.05	139.7	104.8	17.9	161	284	109	4	M8	70	42	25	17.53	11.10	55			
80X100MM	195	75.0	47.5	230	8	19.05	190.5	157.2	24.3	2	190	4	19.05	152.4	127.0	19.5	220	423	163	4	M10	102	52	32	23.80	15.87	70			
100X150MM	216	98.0	76.2	280	8	22.2	241.3	215.9	25.9	2	230	8	22.2	190.5	157.2	24.3	226	459	152	4	M10	102	58.5	35	28.57	19.05	70			



Mevada Engineering Works Pvt. Ltd.

Unit No. 1, Plot No 9, Mistry Ind. Estate, I.B. Patel Road,
Goregaon (East), Mumbai : 400063, Maharashtra, INDIA.

Telephone : +91 - 22 - 2685 9960 / 42523200

Fax : +91 - 22 2685 2045 / 42523202

Email : info@saturnvalves.com / sales@saturnvalves.com

Web : www.saturnvalves.com



50
Years
OF SERVICE