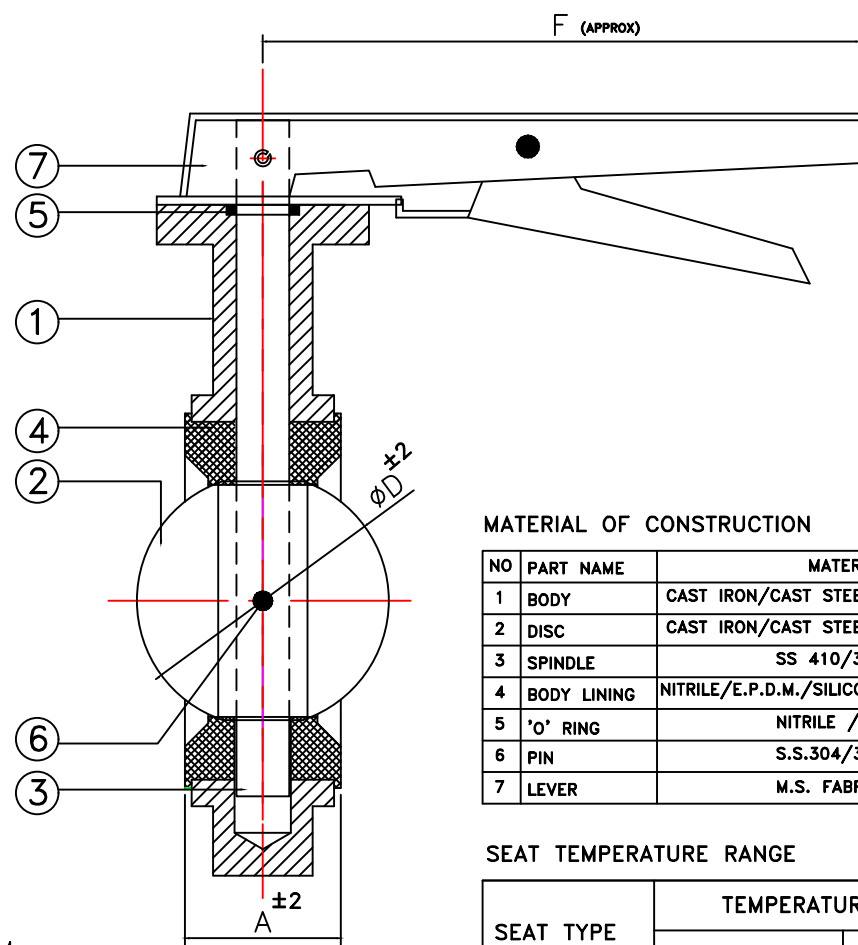
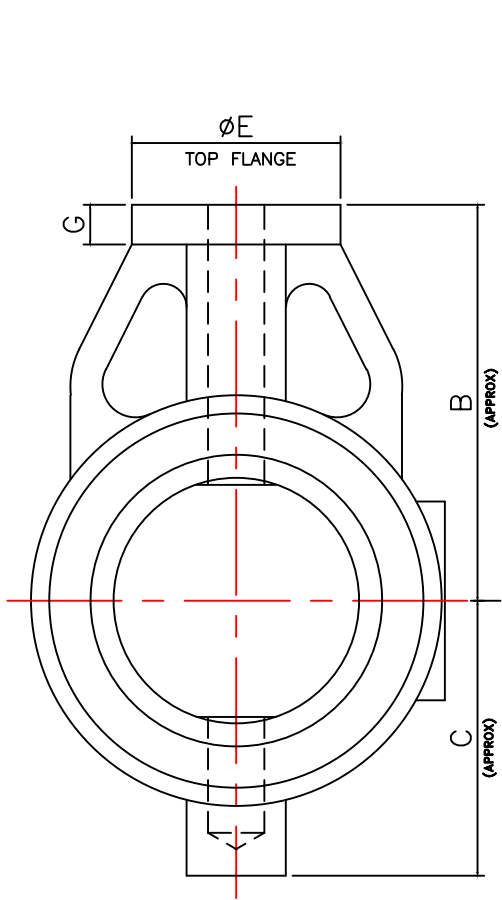




**Mevada Engineering Works Pvt. Ltd.**

Unit No.1, Plot No.9, Mistry Industrial Estate,I.B.Patel Road,  
Goregaon (East), Mumbai - 400063. INDIA  
Email: sales@saturnvalves.com  
Visit: www.saturnvalves.com

DRN MASUM	DATE 20/04/2018	
WAFER TYPE BUTTER FLY VALVE.		
DRG. NO :		WBFV/40-200



**MATERIAL OF CONSTRUCTION**

NO	PART NAME	MATERIAL
1	BODY	CAST IRON/CAST STEEL/S.S.304-316
2	DISC	CAST IRON/CAST STEEL/S.S.304-316
3	SPINDLE	SS 410/304/316
4	BODY LINING	NITRILE/E.P.D.M./SILICON/VITON/HYPALON
5	'O' RING	NITRILE / E.P.D.M.
6	PIN	S.S.304/316
7	LEVER	M.S. FABRICATED

**SEAT TEMPERATURE RANGE**

SEAT TYPE	TEMPERATURE RANGE	
	Min.	Max.
NITRILE	-13°F(-25°C)	212°F(100°C)
EPDM	-13°F(-25°C)	250°F(120°C)
SILICON	-58°F(-50°C)	356°F(180°C)
VITON	-23°F(-5°C)	392°F(200°C)
HYPALON	-4°F(-20°C)	250°F(120°C)

**TESTING**

PRESSURE RATING	HYDROSTATIC SHELL TEST		HYDROSTATIC SEAT TEST	
	Kg/CM2	PSI	Kg/CM2	PSI
PN16	22	310	16	225
PN10	15	210	10	140

NOTE : ALL DIMENSION ARE IN MM.

SIZE		A	B	C	D	E	F	G	TOPFLANGE MOUNTING (I.S.O 5211)
MM	INCH								
40	1½"	36	92	52	40	65	180	15	F05
50	2"	43	103	70	50	65	180	15	F05
65	2½"	46	110	76	63	65	180	15	F05
80	3"	46	118	85	76	65	215	15	F05
100	4"	52	148	102	100	65	215	15	F05
125	5"	56	164	115	125	65	215	15	F05
150	6"	56	176	130	150	65	265	15	F05
200	8"	60	230	156	200	75	325	15	F07

**CONFORMITY TO CODES & STANDARDS**

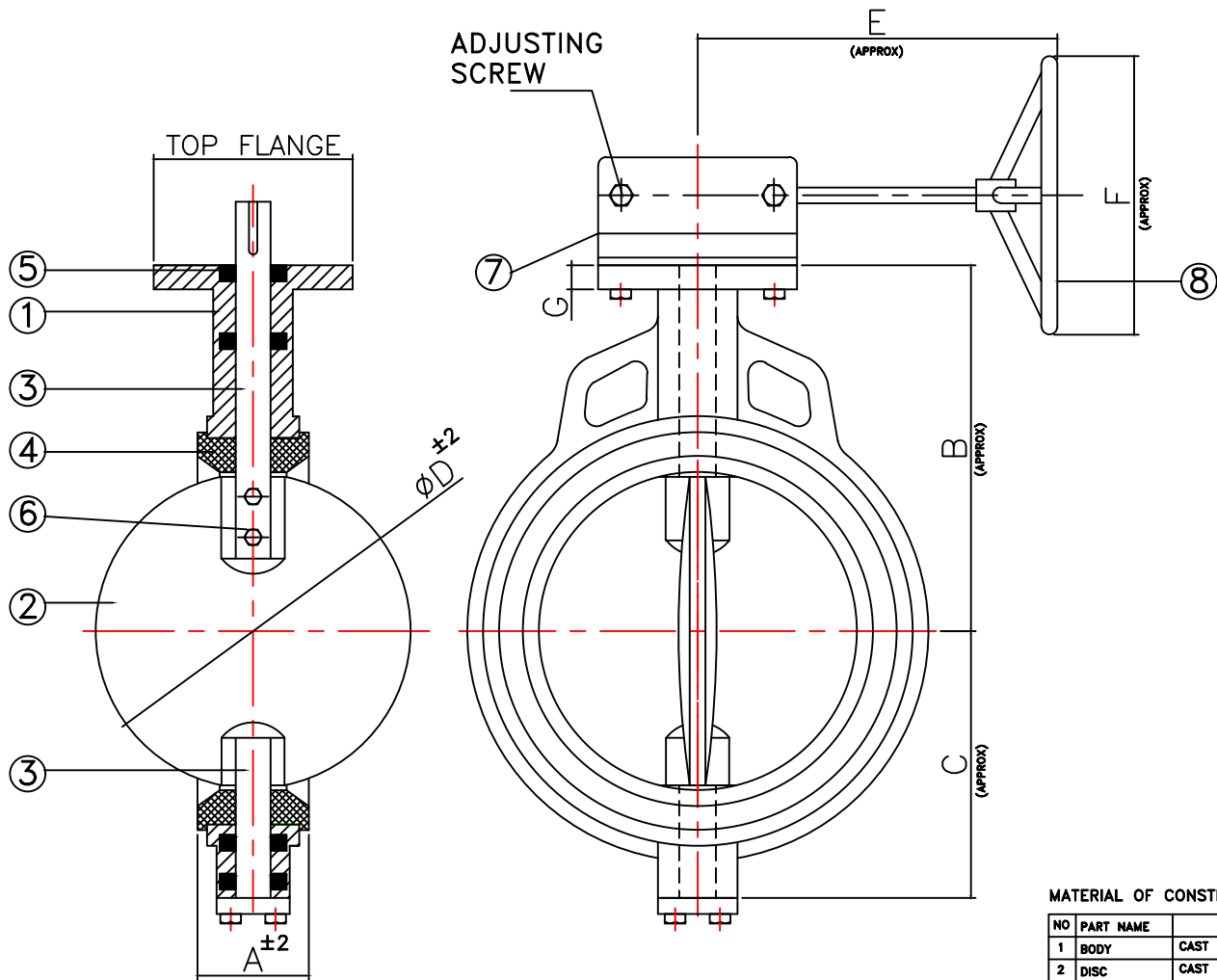
- 1) GENERAL DESIGN & MANUFACTURE :- BS 5155 / API 609 / EN 593 / IS 13095
- 2) VALVE FACE TO FACE DIMENSION :- BS 5155 / ISO 5752 / API 609
- 3) TOP FLANGE DRILLING :- ISO 5211
- 4) VALVE INSPECTION & TESTING :- BS 6755 Part - I / API 598 / EN 12266-1
- 5) FLANGE STANDARD CONFORMITY :- ANSI 150 / ANSI 125 / BS 10 TAB D & E  
IS 6392 NP 0.6 / 1.0 / 1.6



**Mevada Engineering Works Pvt. Ltd.**

Unit No.1, Plot No.9, Mistry Industrial Estate, I.B.Patel Road,  
Goregaon (East), Mumbai - 400063. INDIA  
Email: sales@saturnvalves.com  
Visit: www.saturnvalves.com

DRN MASUM	DATE 20/04/2018	
WAFER TYPE BUTTERFLY VALVE.		
DRG. NO :	WBFV-G/200-450	



NOTE : ALL DIMENSION ARE IN MM.

**MATERIAL OF CONSTRUCTION**

NO	PART NAME	MATERIAL
1	BODY	CAST IRON/CAST STEEL/S.S.304-316
2	DISC	CAST IRON/CAST STEEL/S.S.304-316
3	SPINDLE	SS 410/304/316
4	BODY LINING	NITRILE/E.P.D.M./SILICON/VITON/HYPALON
5	O' RING	NITRILE / E.P.D.M.
6	PIN	S.S.304/316
7	GEAR BOX	CAST IRON
8	HAND WHEEL	M.S. FABRICATED

SIZE		A	B	C	D	E	F	G	TOP FLANGE MOUNTING (I.S.O 5211)
MM	INCH								
200	8"	60	230	156	200	285	300	15	F10
250	10"	68	266	196	250	285	350	18	F10
300	12"	78	300	230	298	285	350	18	F10
350	14"	92	320	272	348	300	350	22	F12
400	16"	102	385	302	394	305	500	22	F14
450	18"	114	405	325	433	305	500	24	F14

**TESTING**

PRESSURE RATING	HYDROSTATIC SHELL TEST		HYDROSTATIC SEAT TEST	
	Kg/CM2	PSI	Kg/CM2	PSI
PN16	22	310	16	225
PN10	15	210	10	140

**SEAT TEMPERATURE RANGE**

SEAT TYPE	TEMPERATURE RANGE	
	Min.	Max.
NITRILE	-13°F(-25°C)	212°F(100°C)
EPDM	-13°F(-25°C)	250°F(120°C)
SILICON	-58°F(-50°C)	356°F(180°C)
VITON	-23°F(-5°C)	392°F(200°C)
HYPALON	-4°F(-20°C)	250°F(120°C)

**CONFORMITY TO CODES & STANDARDS**

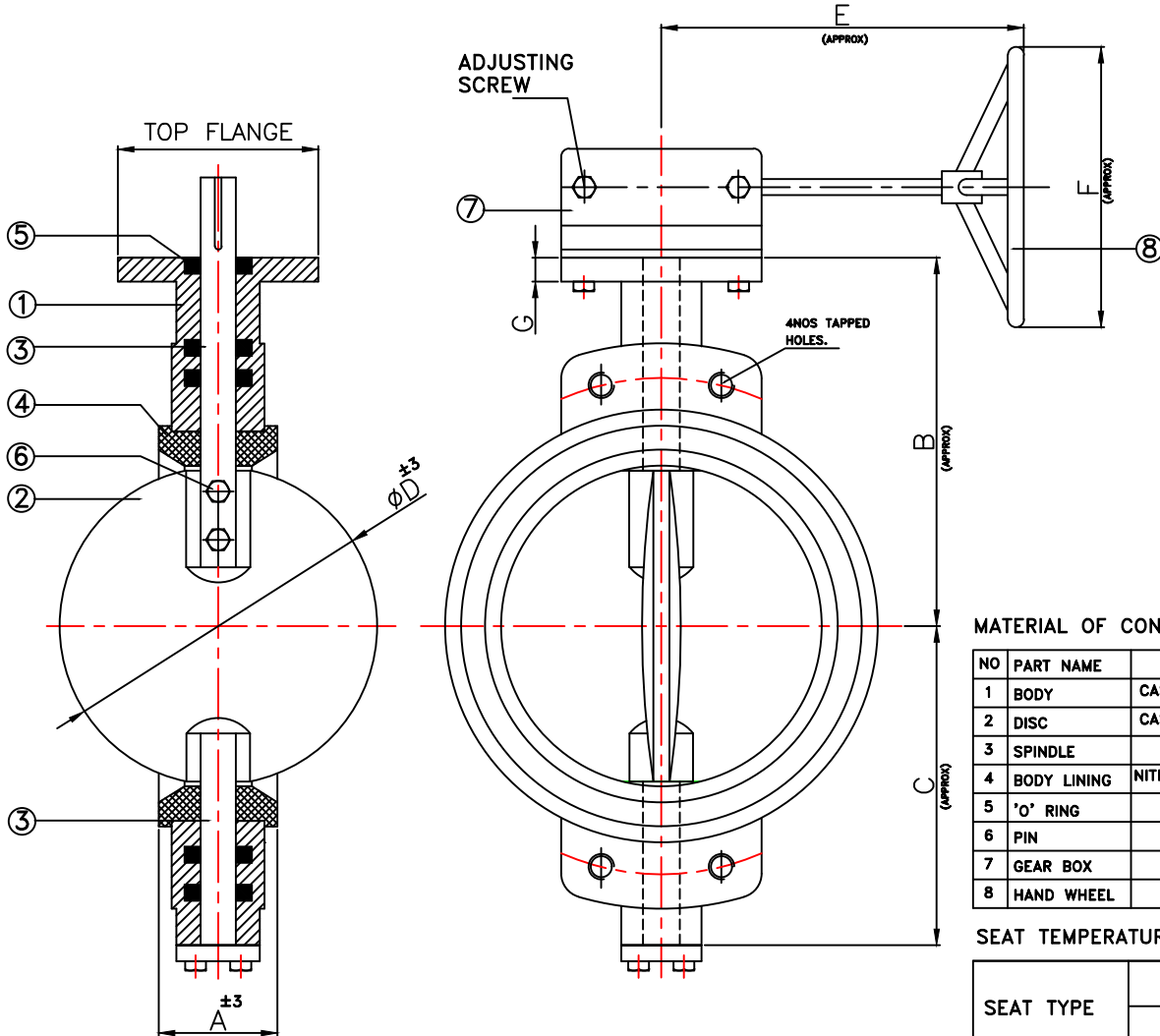
- 1) GENERAL DESIGN & MANUFACTURE :- BS 5155 / API 609 / EN 593 / IS 13095
- 2) VALVE FACE TO FACE DIMENSION :- BS 5155 / ISO 5752 / API 609
- 3) TOP FLANGE DRILLING :- ISO 5211
- 4) VALVE INSPECTION & TESTING :- BS 6755 Part - I / API 598 / EN 12266-1
- 5) FLANGE STANDARD CONFORMITY :- ANSI 150 / ANSI 125 / BS 10 TAB D & E  
IS 6392 NP 0.6 / 1.0 / 1.6



**Mevada Engineering Works Pvt. Ltd.**

Unit No.1, Plot No.9, Mistry Industrial Estate, I.B.Patel Road,  
Goregaon (East), Mumbai - 400063. INDIA  
Email: sales@saturnvalves.com  
Visit: www.saturnvalves.com

DRN MASUM	DATE 20/04/2018	
WAFER TYPE BUTTERFLY VALVE.		
DRG. NO :		WBFV-G/500-900



**MATERIAL OF CONSTRUCTION**

NO	PART NAME	MATERIAL
1	BODY	CAST IRON/CAST STEEL/S.S.304-316
2	DISC	CAST IRON/CAST STEEL/S.S.304-316
3	SPINDLE	SS 410/304/316
4	BODY LINING	NITRILE/E.P.D.M./SILICON/VITON/HYPALON
5	'O' RING	NITRILE / E.P.D.M.
6	PIN	S.S.304/316
7	GEAR BOX	CAST IRON
8	HAND WHEEL	M.S. FABRICATED

**SEAT TEMPERATURE RANGE**

SEAT TYPE	TEMPERATURE RANGE	
	Min.	Max.
NITRILE	-13°F(-25°C)	212°F(100°C)
EPDM	-13°F(-25°C)	250°F(120°C)
SILICON	-58°F(-50°C)	356°F(180°C)
VITON	-23°F(-5°C)	392°F(200°C)
HYPALON	-4°F(-20°C)	250°F(120°C)

**TESTING**

PRESSURE RATING	HYDROSTATIC SHELL TEST		HYDROSTATIC SEAT TEST	
	Kg/CM2	PSI	Kg/CM2	PSI
PN 6	10	140	6	90
PN10	15	210	10	140

NOTE : ALL DIMENSION ARE IN MM.

SIZE		A	B	C	D	E	F	G	TOP FLANGE MOUNTING (I.S.O 5211)
MM	INCH								
500	20"	127	465	405	470	370	500	26	F16
550	22"	127	490	415	525	370	500	26	F16
600	24"	154	540	460	570	350	600	26	F16
700	28"	229	565	515	660	380	600	28	F16
750	30"	229	590	540	740	380	600	28	F25
800	32"	241	588	650	760	396	600	28	F25
900	36"	241	720	660	890	396	600	28	F25

**CONFORMITY TO CODES & STANDARDS**

- 1) GENERAL DESIGN & MANUFACTURE :- BS 5155 / API 609 / EN 593 / IS 13095
- 2) VALVE FACE TO FACE DIMENSION :- BS 5155 / ISO 5752 / API 609
- 3) TOP FLANGE DRILLING :- ISO 5211
- 4) VALVE INSPECTION & TESTING :- BS 6755 Part - I / API 598 / EN 12266-1
- 5) FLANGE STANDARD CONFORMITY :- ANSI 150 / ANSI 125 / BS 10 TAB D & E  
IS 6392 NP 0.6 / 1.0 / 1.6